

CONGREGATIONAL LIFE SUMMARY



TABLE OF CONTENTS

1. Introduction	Page 3
2. Palms History Timeline	Page 4
3. Palms: Mission, Vision, Values	Page 9
4. Ministries/Worship	Page 10
5. Ministries/Worship/Music	Page 12
6. Ministries/Connection	Page 13
7. Ministries/Serve	Page 14
8. Ministries/Serve/Outreach	Page 14
9. Ministries/Serve/Deacons	Page 16
10. Ministries/Nurture	Page 17
11. Ministries/Nurture/Youth	Page 18
12. Ministries/Nurture/Seniors	Page 19
13. Palms Preschool	Page 20
14. Presbyterian Women	Page 21
15. Presbyterian Men	Page 22
16. Church Governance	Page 23
16. Committees of Session	Page 24
17. Building and Property	Page 26
18. Financial Statement	Page 28
19. Palms' Staff	Page 30
20. Palms' Disciples/Who We Are	Page 32
21. Palms' Community	Page 33
22. The Larger Faith Community	Page 37
23. Palms' Search Process	Page 38

Palms Presbyterian
3410 S. Third Street
Jacksonville Beach, FL 32250
www.palmschurch.org



INTRODUCTION



Palms Presbyterian Church (Palms) is searching for an Associate Pastor to replace our recently retired Associate Pastor. Palms views this work seriously, thoughtfully and hopefully as we lean on God's guidance in this journey of seeking an Associate Pastor who will feel at home in our transformative and welcoming community as Palms embraces the grace of Christ. Palms has a rich history of 65 years in the beautiful and vibrant Jacksonville Beaches community. Palms describes itself as traditional, yet

progressive; spiritually vital; hospitable; generous; embodied with a variety of skills and talents. Palms is diverse in our theological foundations and world views but sees this as a strength, enabling us to embrace differences and stretch our acceptance and understanding of others. Palms is known for our generous physical and financial participation in local and global missions as we live to the Matthew 25 Church invitation. Palms is also known for its inspirational and uplifting music program that involves many age groups. Palms warmly welcomes those of all ages who are seeking a place of worship and is an exceptional church for seniors. Palms Preschool of 100+ children is a great source from which we can attract young families.

Palms' Core Values include:

- Compassion and Love
- Spiritual Growth
- Service and Connection
- Creative Spirit
- Honesty and Integrity

As Palms embraces these core values, our mission, and vision, we also strive for continuous improvement and evolution. Palms values a strong organizational structure with all of us working effectively together to build upon our solid foundation. Palms disciples are there for each other in community as we grow in our faith, strive to discern our gifts, and serve God through engagement and volunteerism. Palms is excited to be in this place - a place of transition, contemplation, research, and many prayers. Palms is confident God will lead us to the right Associate Pastor who will live with us in our commitment to be rooted in Christ as we reach out in His love.



Matthew 25:31-46 calls all of us to actively engage in the world around us so our faith comes alive and we wake up to new possibilities. Convicted by this passage both the 222nd and 2223rd General Assemblies (2016-2018) exhorted the PC(USA) to act boldly and compassionately to serve people who are hungry, oppressed, imprisoned or poor.

By accepting the Matthew 25 invitation, Palms committed to become a more relevant presence in the world. As a Matthew 25 Church, Palms recognizes Christ's urgent call to be a church of action where God's love, justice and mercy shine forth and are contagious. Palms rejoices in how our re-energized faith can unite all Presbyterians for a common and holy purpose: our common identity to do mission!

PALMS HISTORY TIMELINE

1956

In 1956, Jacksonville Beach was a little seaside village. It had a small population and was rural in nature. Third Street South, which was a section of A1A, was a two-lane street with wide ditches on each side of the road. The south end of Jacksonville Beach was sparsely populated with permanent residents. During the summer tourist season, the population of the beach communities would greatly increase, but after Labor Day the beaches were basically empty. One day a gentleman came to see Oliver Patten around noon. He saw a five-year-old girl riding her tricycle and asked if her dad was at home. She replied that he would be home soon for lunch. The gentleman looked at his watch and decided to wait. This gentleman was John "Jack" Hess, a retired AAA employee and a former elder in the National Presbyterian Church in Washington, D.C. Mr. Hess began a conversation with Sylvia Jean Patton, now known as Jeannie Fisher. He asked her if she went to Sunday School. As a child would do, she explained there was no church near the house. Mr. Hess replied he would have to see about getting a Presbyterian church at the south end of Jacksonville Beach where the family could worship closer to home.



1956 NOVEMBER 16

Mr. Hess subsequently canvassed the beach towns asking people if they would be interested in a church on the south end of Jacksonville Beach. He placed a notice in the local newspaper of a public meeting to discuss the organization of a new Presbyterian church. The organizational meeting was held at the Community Center, Jacksonville Beach with Rev. Dr. Dan Braby, a retired Presbyterian minister from Battle Creek, MI, guiding the meeting. Rev. Dr. Dan Braby, organizing pastor, remained for six months.



1956 DECEMBER 2

First worship service in Women's Club, 2nd Ave N. and 5th Street located on the same street as the Baptist Church and St. Paul's Catholic Church.

1957

First communion held.

PALMS HISTORY TIMELINE

1957 APRIL 28

Charter granted by Synod of Florida Presbyterian Church, U.S.A. Named "The Atlantic Shores Presbyterian Church." Membership 31 – elders, deacons and trustees elected.

1958 SEPTEMBER 18

Name changed to "The United Presbyterian Church of Jacksonville Beach" to avoid confusion with Community Presbyterian in Atlantic Beach.

1958 EARLY FALL

Church moved to Mr. Bonnie I. Smith's building at 33rd Ave. S. and 3rd Street South. Mr. Smith had formerly operated a riding stable from this location.

1959 JULY

The congregation called Rev. James W. Tinsley as the first installed Senior Pastor.

1960 JANUARY 14

Membership 45.

Name changed to "The Palms Presbyterian Church."

1960 MAY

Five acres of land purchased between 34th and 35th Ave S. and 3rd Street.

1961 JULY 23

Dedication of first permanent building unit (hands laid on unfinished walls as part of the ceremony).

1961 OCTOBER 8

First service in new permanent building. Cost: \$67,000

1969 JANUARY

The Beaches Christian Services Corps, Inc. accepts recommendation of Rev. W. Chester Keller, pastor of Community Presbyterian Church, and Dr. Tinsley to pursue a federally financed high-rise apartment building for the elderly, now known as Pablo Towers.



PALMS HISTORY TIMELINE

1969 SEPTEMBER 14

Groundbreaking ceremony for new sanctuary and administrative buildings.

1970 JUNE 21

Dedication and first worship service held in new sanctuary.
Cost: \$230,000

1972 APRIL

Groundbreaking ceremony for Pablo Towers.

1976 FEBRUARY 13

Dr. M.J. Palmer becomes Director of Music.

1980 MAY 4

Congregation called Dr. John H. "Jack" Swann as the second installed Senior Pastor.

1983

Merger of United Presbyterian Church, U.S.A. and Presbyterian Church, U.S.

1985 APRIL

The Presbytery of St. Augustine is formed. Palms becomes one of its churches.

1985 SEPTEMBER 8

Dedication of west building with Fellowship Hall, childcare center, kitchen and multiple use classrooms. Cost: \$1,036,907

1985 SEPTEMBER 12

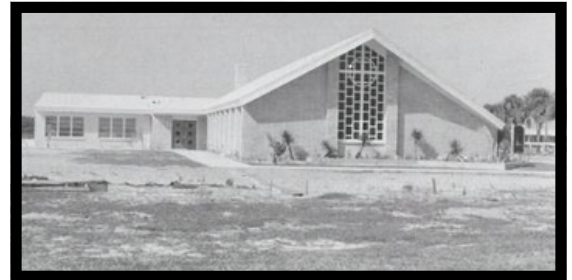
Palms supports creation of B.E.A.M.- Beaches Emergency Assistance Ministry

1985 SEPTEMBER 16

Palms Preschool and Child Care Center opens.

1991 DECEMBER 6

Dedication of faceted stained-glass windows in the sanctuary.



PALMS HISTORY TIMELINE

1996

Organ/Building Committee purchased a Casavant pipe organ at an estimated cost of \$252,430 and renovated the sanctuary to accommodate console, choir, and additional pews.

1997 JANUARY 26

Mortgage burning ceremony for Fellowship Hall.

1998 MAY 31

First church service with new pipe organ and completed renovation work. Cost: \$1,200,000



1999 MAY

Rev. Carol DiGusto is called and installed as the first Associate Pastor for adult ministries. She was the Associate Pastor of Serve, an umbrella over Outreach and the Board of Deacons.

2001

Pastor Leon Dorleans of Haiti preached at Palms on World Communion Sunday. His visit sparked the decades long partnership between Palms and the Haiti Outreach Ministry.

2002

The Rev. Tom Walker is called as Palm Presbyterian Church's third installed senior pastor.

2003

Palms first mission trip to Haiti.

2004

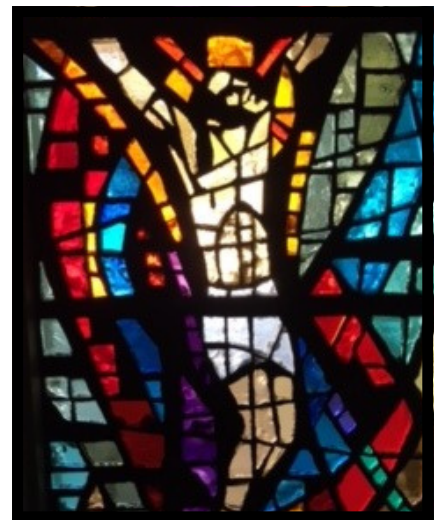
Dr. Ronn Cummings joins the staff as Director of Music Ministries.

2004

"The Oasis Campaign" was initiated to build the new educational/administrative building complex. The buildings were built to surround the future Oasis Garden designed to be a sacred gathering space.

2004 OCTOBER

Rev. Andrew Kukla is called and installed as Associate Pastor for Discipleship, Adult Christian Education and Formation.



2006 JUNE

Rev. Katie Day is called and installed as Associate Pastor for Youth.



PALMS HISTORY TIMELINE

2007

Completion of "The Oasis Campaign" after raising \$6,380,000. In the fall of 2007, another campaign was started with a "Burn The Mortgage" theme raising an additional \$2,870,000 for a total of \$9,250,00 for the new educational and administrative buildings, Patten Hall and Hess Chapel, as well as all the furnishings.

2010

Celebrated the official "burning of the mortgage."

2013

Rev. Laurie Furr-Vancini is called and installed as Associate Pastor for Nurture.

2015

Barye Fe, a Haiti Outreach Ministry School sponsored by Palms, opened its doors for the first time.

2015

Rev. Holly Inglis is called and installed as Associate Pastor for Nurture and Connections.

2015

Rev. Laurie Furr-Vancini becomes Associate Pastor of Serve.

2016

Launch of "The Embrace the Promise Campaign" to build an endowment for maintenance of the church's buildings. The campaign raised more than \$1,800,000.

2019

The Sanctuary was refurbished with paint, new hardwood floors and pew cushions. Cost: \$200,000.

2019 AUGUST

Rev. Dr. Tom Walker retires.

2020 AUGUST

Became a Matthew 25 church.

2021 AUGUST

Pastor Byrant Anderson is called to be the fourth Pastor/Head of Staff



PALMS MISSION/VISION/ VALUES

Mission Statement

By the grace of Jesus Christ, we are called to worship God, to connect in community, to nurture in love, and to serve in the world.

Vision Statement

Palms is a diverse and transformative community of believers embodying the grace of Christ by:

- Serving as bridge builders for a divided world
- Working as ambassadors for compassion and reconciliation
- Growing servant leaders for God's work in a rapidly changing world.

Core Values

- Compassion and Love - We nurture an open and inclusive environment that respects differences and welcomes everyone.
- Spiritual Growth - We teach and practice lifelong spiritual growth.
- Service and Connection - We are the body of Christ as we respond to the needs of others.
- Creative Spirit - We joyfully embrace innovative approaches to God's work.
- Honesty and Integrity - We are open, trusting, and direct in our relationships.

Ministries

- Worship
- Nurture
- Connect
- Serve

MINISTRIES / WORSHIP

Palms' worship life draws upon the full Biblical tradition of gathering God's people in assembly for praise, proclamation, prayer, instruction, and inspiration. The worship ministry is also intentional about sending God's people out to share the joys and responsibilities of informed discipleship. Our worship life combines ancient liturgies with newer more casual and imaginative forms but the goal remains the same: proclamation of the good news of salvation through Christ and an invitation to hear and to serve God as bridge builders in a divided world, ambassadors of compassion and reconciliation, and servant leaders. The worship ministry is more than Sunday morning. It permeates the endeavors of the entire household of faith. It is incorporated into our mid-week ministries, small groups, Wednesday Evening Services of healing, memorial services, weddings, celebrations of the Sacraments of Baptism and Holy Communion, and regular Chapel times with the Palms Preschool and more. It intentionally cultivates a life of devotion, dedication and faithful discipleship

Our two worship services follow a traditional format. There is one service at 8:30 a.m. followed by fellowship and education time. The second service is at 11 a.m. The Sacrament of Communion is celebrated on the first Sunday of every month. There is an annual Youth Sunday, VBS Sunday, Lessons and Carols Sunday, and a Music Sunday in June. A visiting theologian program features the guest speaker as a worship leader, traditionally in the winter season. The Haitian relationship annually brings one of our Haitian clergy partners to our worship during World Communion Sunday. A weekly evening prayer service takes place each Wednesday evening in the chapel. There are special worship experiences on Christmas Eve, Ash Wednesday, Maundy Thursday, Good Friday, and Easter.

Fortunately, Palms had been offering live streaming of worship to allow those unable to attend church to worship with their church family before the pandemic began. The church was closed for a few months but we continued to worship weekly. Today Palms joyfully offers in-person worship at 8:30 a.m. and 11 a.m., live streaming, and other digital options each Sunday.



MINISTRIES / WORSHIP

Children are included in the first portion of the worship service through children's time and then have the option to adjourn to children's church or remain with their parents for the rest of worship. Children's worship bulletins and activities are provided and typically follow the theme of the pastor's message. The children return to the sanctuary in time for the closing hymn and the celebration of sacraments of baptism and communion.



***"Palms has made the worship experience one where
I know without doubt that God IS."***

MINISTRIES/WORSHIP/MUSIC

The role of music in our church is to deepen and enhance our sense of worship together and to provide an indescribable means of communicating with God. The worship experience - with its power and mystery, beauty, and grace - is made richer and more profound when we come into a sacred space and worship together supported by excellent music. Music is an integral part of our church's culture. Our outstanding Ministry of Music, under the direction of Dr. Ronn Cummings, provides a meaningful way to worship God. Palms Presbyterian Church is known throughout our community, and throughout the region, for its excellence in musical expression.

The Ministries of Music are broad and include The Children's Choir, The Camp Choir, The Chancel Bell Choir, The Chancel Choir, and our Choral Intern Program. Choral interns are music students from local universities whose presence in our Chancel Choir adds a diverse array of talent to the ministry of music. It is common for Palms to invite highly regarded instrumental musicians from this musically gifted community. Members of the Jacksonville Symphony Orchestra participate in special worship Sundays.

The newly-refurbished sanctuary is a welcoming venue for the Palms Fine Arts Series, a very highly regarded music and choral program. Dr. Cummings brings in nationally recognized performers, such as the St. Olaf Choir, the Concordia Choir, as well as local musicians, namely the First Coast Wind Symphony, the Festival Singers of Florida, and the UNF Chamber Singers.

Dr. Ronn Cummings was hired as Director of Music and Fine Arts in 2004. Cathy Fortson has been the organist and accompanist since 2009.

The church organ built by Casavant Freres in St. Hyacinthe (near Montreal), Quebec was installed in 1998. The Palms organ is Opus 3773 and includes 23 stops, 29 ranks and 1,648 pipes.



MINISTRIES/CONNECTION

The heart of Palms is deepened and strengthened through the connections made in Christian community. The Connection Ministry is responsible for welcoming guests, helping people connect within Palms to find ways to be nurtured and to serve, inviting people into membership through New Member classes, and creating space and occasions for people to build and strengthen community.

Members of Palms value the relationships they share in Christ, from the weekly coffee hour after worship to organized intergenerational events, such as the annual Blessing of the Pets, Friendsgiving, Easter brunch and egg hunt, beach day at Hannah Park, and the all-church retreat.

Central to the covenant we make with God and with one another is mutual affirmation and accountability. We support and encourage one another as we share God's love, serve God's mission, and experience the hospitality of Jesus Christ in community.



MINISTRIES/SERVE

Palms believes that disciples of God connected in community and nurtured in love serve God's work in the world. All of Palms' ministries are interconnected and lead us to make a difference in the lives of those in and around Palms and throughout the world.

Our Serve Ministry enables us to live out our faith directly through the work of justice, compassion, and service. Serve is the umbrella for Outreach and the Board of Deacons. This ministry focuses on the foundations of a life in Christ: reaching out through service (Outreach) in our community and reaching out in compassion to our fellow disciples and friends (Board of Deacons). Our understanding is that service is not so much about something we do but who we are as servant disciples.

MINISTRIES/SERVE/OUTREACH

Outreach at Palms is rooted in relational ministry with local and global partners. We walk with others in ministry. Palms works with community partners to enhance access to neighbors' basic needs. Our local ministries include Beaches Emergency Assistance Ministry (BEAM), Mission House serving the homeless at the beach, five elementary schools and three after school centers at the beach and Sanctuary on 8th Street serving children in Jacksonville, Dial a Ride serving seniors and challenged adults, Beaches Community Kitchen and Beaches Habitat for Humanity. Palms disciples donate school supplies and healthy snacks in August and healthy snacks again in February. The Angel Tree project provides gifts for 350 children and seniors and the budgeted Kids' Kitchen program provides weekend meals for 100 children throughout the summer. Palms collaborates with BEAM and Oak Harbor Baptist Church providing food for families twice a month and serves shoppers in BEAM's Mayport Pantry each Wednesday. Palms also serves tacos to Mission House clients once a month and delivers meals to those in need of food assistance several times a year. Palms' Lifecycles ministry repairs used bikes and donates them to those in need of transportation. Our Common Ground round tables were well attended by Palms disciples and others in the community. This program is planning to resume in the fall of 2022.



MINISTRIES/SERVE/OUTREACH

Nationally, Palms financially supports Presbyterian Disaster Relief.

Palms supports global missions in three countries financially and with mission trips.

The goal of Affordable Medicines For All (AMFA) is to facilitate African solutions for African problems and is seeing success in the manufacture and delivery of clean, safe pharmaceuticals. The new emphasis for AMFA is in Capetown, South Africa at the Home of Compassion in Delft, a church that provides meals to schools and hospitals, educational programs for adults, job training, assistance in procuring employment, and medical care. South Africa has been heavily challenged by COVID raising the need for more assistance. Palms' teams have traveled to Capetown twice to work with the dedicated church members of Home of Compassion. We have developed this partnership with Richard and Ursula Wagner and their AMFA ministry for 25 years.

Palms supports two ministries in Haiti. CODEP, Comprehensive Development Project, is a reforestation program that provides educational support and economical development in rural Haiti. Haiti Outreach Ministries and Palms have developed a strong relationship over the last twenty years. HOM, founded by Leon Dorleans has 5 campuses in the poorest area of Port au Prince providing worship, education for over 2,000 students three years old through university, clean water, medical care, vocational instruction, and employment opportunities. The 5th campus will soon offer a trade school to enhance the employment opportunities of our students and community members. Palms first visited Haiti with HOM in 2003 and continued to send teams (70+) until 2020 when Haiti's instability and subsequent violence prevented team travel. Palms will return when the HOM leaders deem it safe. Over 100 Palms members sponsor students in the schools and Palms disciples have served on the HOM board for a combination of eighteen years. Palms has just begun supporting Art Creation Foundation for Children designed to develop personal growth and empowerment in Jacmel, Haiti.

Palms is developing a new relationship in Egypt with the Evangelical Presbyterian Church of Egypt and the Evangelical Theological Seminary. We have shared and will share weekends with professors of the Seminary. A Palms team is forming to plan a mission trip for October 2022.

Palms is open to new ways of serving God in our communities.

MINISTRIES/SERVE/DEACONS

Our Board of Deacons focuses on the care of our congregation, serving our disciples in many ways. Serve lives into the requirement for action in Jesus' command, "Love your God with all your heart and with all your soul and with all your mind". This is the first and greatest commandment. And the second is like it, "Love your neighbor as yourself." Loving God compels us to love and serve others. It is fundamentally who we are.

The 19 active deacons provide ten ministries to our disciples and friends to enhance their lives. The Shepard Ministry is in contact with each disciple through cards, emails, and calls. The Health Ministry has held Health Fairs at Palms inviting many facets of caregivers to share their knowledge with our disciples and our community. This ministry has and is advising Session on proper protocol through the COVID pandemic. The remaining eight ministries, Pastoral Visitors, Love Callers, Congregational CareGivers, Flower Ministry, Prayer Links, Loaves and Fishes, Walking the Mourners' Path, and Food for the Soul, offer assistance or celebration throughout the year. The deacons work closely with over 300 volunteers to create a sense of value, acceptance, and love for Palms' congregation.

The Board of Deacons meets monthly under the direction of the Associate Pastor for Serve to welcome guest speakers and share impactful moments in their ministry and upcoming events.

Doing mission together is often what unites members who have diverse theological and cultural beliefs. New members mention that they are attracted by these mission opportunities.



MINISTRIES/NURTURE

In order to join in God's work at Palms and throughout the world, we intentionally nurture ourselves in and through the love of God. This nurture results in a deepening of our relationship with God which leads to transformation into more Christ-like individuals. When we live and love as Christ did, we have a passion for working in the world to bring God's kingdom. This means that as a congregation we are called to nurture Palm's disciples through opportunities for spiritual growth for all ages.

The Nurture Ministry helps people of all ages learn, live, love, and serve in the way of Jesus. Our Nurture Ministry provides opportunities as varied as mission trips for middle and high school students, Vacation Bible School, and meditation spaces for every person who comes to Palms. All of these opportunities are to deepen and strengthen our relationship with God.

True faith formation is holistic- it involves Christian education, worship, connecting with others, and service. Consequently, the Nurture Ministry provides opportunities for people to engage in meaningful experiences that incorporate all of these in a variety of ways. In addition to Sunday School and VBS, we have Bible studies, book studies, centering prayer, Lectio Divina, seasonal labyrinth walks, and annual visiting theologians.

We also recognize that faith formation occurs at home and in daily life, as much as it does on Sunday morning and at church, our goal is to nurture and equip parents to lead faith development at home. This can be accomplished through the Faithful Family Library, the Faithful Family Facebook Page, and seasonal take-home bags with devotions and activities. We also bring all generations together for activities, fellowship, and worship.

"Palms appealed to my family because it felt like family. There was a sense of welcoming and love that was present. I greatly value the open discussions that can occur due to the welcoming of intellectual thought and development of faith through an allowance for questions that might be discouraged in other churches."



MINISTRIES/NURTURE/YOUTH

Palms Youth Ministry provides opportunities for 6th through 12th graders to find their place at Palms through fellowship, study, worship, and service. Our youth connect through many fellowship outings throughout the year. On any given weekend you might find our youth growing relationships through fellowship at places like Adventure Landing, the local bowling alley, local restaurants, the beach, someone's swimming pool, or with movie/game nights in our own newly renovated youth room. Our youth are provided with small group discussions in Sunday School and during youth group where they seek to grow closer to God and to one another in all they do.

Recently, our Youth Leadership Team worked on a three-year plan focusing on growing leaders through service and outreach. Over the course of three years, youth group members and advisors along with intergenerational partners will experience local, national, and international mission work. Serving in our community is a vital part of our call as members of the body of Christ, but it does not stop here in our own backyard. Our goal would be for our group to study and learn about the injustices related to hunger, homelessness, poverty, and the peacemaking process on a local, national, and international level.

Learning more about the facts related to these important issues that are vital to our Christian journey and then experiencing them firsthand have the potential to change lives forever. As a part of our youth's faith journey, we feel it is important for students to be aware of what it means to be the hands and feet of Christ and to put the Great Commission into action while remembering the words found in Matthew 25 related to the least of these around us. Working first with local partners, then with partners around the United States, followed by global partners, students will have a well-rounded and global perspective related to the injustices we are studying. Through hands-on servant leadership, interactive and participatory worship, and purposeful learning sessions, our students will learn ways that they can become bridge builders through their service and interactions, thereby truly making a difference in the world around them by living out the scriptures.



Throughout the school year and in the summer, our youth group typically goes on weekend retreats, attends conferences, and participates in mission trips locally and beyond. These retreats and trips focus on growing spiritually as a community and on serving others, led by the example Christ set for us. We participate in Presbytery retreats locally at Camp Montgomery, our own group retreats, the Montreat Summer Youth Conference, alongside others at the Appalachian Service Project (ASP), the CROSS mission program at Myers Park Presbyterian Church in Charlotte, and through mission trips in the United States and Ireland that are planned for the upcoming years.

Palms Youth Ministry is a place to love and be loved by God and one another. Transformed and growing into Christ, we are intentionally prepared to be bridge builders, ambassadors and servant leaders in God's world.

MINISTRIES/NURTURE/SENIORS

In January 2018, a designated older adult ministry was established at Palms Presbyterian Church. Initially, studying and surveying were completed to determine a direction that would meet the needs of the 65+ disciples at Palms. A Senior Council was formed to work with a program coordinator. In the first year, successful programs were held with approximately 60 people in attendance. The first program year included workshops on forgiveness, mindfulness, and hospice.

In 2019, at the group's direction, it was decided to call the 65+ group "Seasoned Saints." In 2019, United Church of Christ (UCC) minister Bill Wildey took over the coordinator position at Palms.

Since 2019 and early 2020, Seasoned Saints has sponsored several major events. Highlights include a workshop on storytelling, a luncheon with the Head Curator at the Cummer Museum of Art, workshops on the health of the brain and body, and a luncheon titled "Love Abounds" that featured music by the Palms choral interns. The average attendance at each event was between 80-90. In early 2020, a trip to the Mayo Clinic Simulation Lab was offered. Additional classes, focusing on how cinematic moments say something about faith, have been offered.

In addition, the Seasoned Saints coordinator works with the Youth Ministry Coordinator to create opportunities for intergenerational interaction. Several events, such as a game night and church picnic, have been successful.

PALMS PRESCHOOL

Palms Preschool first opened in September 1985 and is home to 100+ children ages 1 - 5 years old operating from 7 a.m. - 6 p.m. daily, Monday-Friday. The program operates year-round beginning in August. There is also an extended day program for school-age children 1st - 6th grades. The preschool promotes high-quality learning through relationship building and intentional teaching strategies. The church and preschool collaborate by offering a bi-weekly preschool chapel that incorporates Bible stories, music, and movement. Palms Preschool, while a ministry of the church, is self-sustaining with tuition and fundraising activities.



PRESBYTERIAN WOMEN

Presbyterian Women at Palms Presbyterian Church (Palms PW or PW) is a part of an independent organization of women within the Presbyterian Church (USA) with more than 300,000 members worldwide. The program and resource options offer a variety of ways for women to live out their faith within an inclusive, caring community.

Palms PW is a group of 70+ women committed to the PW Purpose:

- Nurturing our faith through prayer and Bible study
- Supporting the mission of the church worldwide
- Working for justice and peace (in our immediate community and globally)
- Building an inclusive, caring community of women to strengthen the Presbyterian Church (USA) and witness to the promise of God's Kingdom.

Palms PW currently includes several circles and study activities including two morning circles, two afternoon circles, and one evening circle. Palms PW primarily uses the Horizons Bible study materials, published by the Presbyterian Publishing Corporation.

Circle members pledge financially to a variety of programs and missions including several connections with Haiti Outreach Ministries (HOM), sponsoring children, sewing clothes, and providing uniforms for HOM schools. PW Crafters' proceeds from the craft sales are sent to local missions and also to Cuba, Africa, and Haiti. They also make donations to community groups, such as BEAM and the PW Sarah Breakfield Scholarship. Dorcas Memorial Receptions are a ministry offered to the Palms congregation through PW. Members of PW plan, host, and serve a reception following a Palms memorial service. Food, flowers, and table settings are donated by PW members.

A long-time PW community outreach activity occurs once a year at Pablo Hamlet and Pablo Towers, two affordable housing communities for seniors in Jacksonville Beach. PW prepares a meal and activities to celebrate the birthdays for residents in these two communities.

PRESBYTERIAN MEN

Two dedicated men's Bible study groups have been meeting for 15 -20 years. In addition, for more than ten years the men of the church gather once a month for lunch and fellowship. For the past five years, Palms has been host to an active men's basketball group involving some Palms members as well as other men from the community who are 40+. As an expression of love and hospitality, the men of the church arrange for Easter photos to be taken by a cross adorned with fresh flowers in the Oasis Garden.

"Palms is my family. Palms and its pastors and leaders have given me the opportunity to grow and cherish my faith in Christ. The most important thing is seeing other men and myself come to know the saving grace of Jesus and what that can mean in our daily lives and our relationships with others."



CHURCH GOVERNANCE

Church Board Functions

Session

The session is the governing body of Palms Presbyterian Church and is responsible for the policies, personnel, finances, and membership of the church. Through its own actions and those delegated to the ministries or other designated committees, the session provides programs for nurture, mission, outreach, and connectivity. The session receives new members (referred to as disciples at Palms), conducts the stewardship campaign, and oversees the financial health of the congregation.

The session is composed of nine ruling elders who are called and installed as teaching elders. Session members are elected for three-year terms, three people for each term. An elder completing his/her term may not be eligible for re-election for at least one year. Ruling elders elected to fill a vacancy for less than two years may be elected for a full three-year term.

The clerk is an elder normally not sitting on the session and elected to the session for a term of no more than six years.

The session elects a treasurer for a term not to exceed three years.

The session has the following committees: Finance, Human Resources, and Strategic Planning.

The session may designate other committees and has designated the following: Generosity Team and Building & Property.

Deacons

The Board of Deacons is a ministry of compassion, witness, and service. The deacons will have at least 12 members elected by the congregation for a three-year term. The number of deacons may exceed twelve based on the number of programs of compassion adopted by the deacons. In 2022, 19 deacons served.

Trustees

Palms' Board of Trustees consists of three members whose sole responsibility is to hold legal title to our property.

COMMITTEES OF SESSION

Finance

A financial health assessment, Road to Financial Health, was conducted through the services of the Presbyterian Foundation. Strategies continue to be developed based on the results of that assessment. Palms has no debt. The church expenses are being met, with a small cash reserve. However, there is ample room for growth with the average per capita giving rate at approximately 2.5% of income. The Presbyterian Foundation's report also expressed a need to pay attention to leadership giving and expressed a critical need for Palms to increase bequests and planned giving. There is an endowed fund to handle any emergency or deferred maintenance that needs to be carried out on the sprawling campus and buildings. Engaging the entire congregation in the spiritual discipline of expressing generosity in gratitude to God will continue to be a challenge and opportunity.

Human Resources

The Human Resources Committee works in a supportive and counseling relationship with the Head of Staff and meets monthly to address agenda items such as employee policies, compensation, staffing, job descriptions, the annual review process, preschool employee-related matters, and any other topics related to the church and preschool staff. Budget-related recommendations are made after a review of the current budget and in collaboration with the Finance Committee. Recently, the entirety of the Palms Presbyterian Church Employee Handbook was reviewed and revised. Recommendations requiring session approval are forwarded for their review. The HR Committee views each staff member as a valued partner in ministry.

Strategic Planning

Strategic Planning strives to be the hub for all ministry areas to communicate, plan and assess all aspects of ministry at Palms. It is represented by all staff ministry area directors and members from the Session. Strategic Planning reviews and approves all Baldwin Grant proposals. Baldwin Grants are viable from a generous donation to be used for "new and creative" programming designed to move Palms forward in God's work. For more information see Palms Annual Report for 2021,

COMMITTEES OF SESSION

Generosity

The Generosity Team is responsible for and oversees plans and programs for “planned congregational giving” that can be relied on for budgeting purposes. The annual campaign for support historically has taken place in the fall when the congregants are invited to indicate their plans for supporting the church financially in the coming year. Members are invited to return a ‘pledge’ card as an indication of participation. One campaign included a tree being planted in Haiti as part of the Haiti Reforestation Project. The process is completed by mail with ample promotion by way of bulletins, newsletters, and testimonials included during the worship service. The history of pledges has reflected a gradual decline, yet there is continued support from giving. Recently, the Generosity Team has partnered with the Presbyterian Foundation to incorporate the best practices in stewardship funding, education, and cultivation. A year-round calendar for interpretation, gratitude, and cultivation has been implemented.

Property Committee

The Property Committee is a standing committee for Palms Presbyterian Church under the Stewardship Ministry and is responsible to the Session for the management of the property which includes the appropriate use of church and preschool buildings and facilities, maintenance of the buildings, and enhancement to the grounds and property.

Staff support for the committee is headed by Lori Vaughn, Church Business Director, and includes Alex Crawford, Facilities Director, and Noel Millan, Sexton and Facilities Assistant.

BUILDING/PROPERTY

Buildings and Grounds of Palms Presbyterian Church and Preschool



Palms is blessed with a 5-acre campus that blends beautifully with the ambiance of the beach located just two blocks away.



The sanctuary was updated in 2019 and is a place of worship for up to 500 people. Not only is it elegant in its beauty and simplicity, but it is also handicap accessible. The sanctuary and narthex are 11,992 square feet of stained glass and wood, spacious enough for the Cassavant pipe organ. Members that are unable to worship in person can see and hear the beautiful organ and are a part of the worship experience by joining through the live streaming service.



Connected to the sanctuary is a place for fellowship and for an overflow of attendees for worship services and Fine Arts Concerts. This area is known as Patten Hall and is a large room that will seat up to 180 with a fully functional kitchen and has audio/video capabilities for great flexibility. Round tables are routinely set up allowing for functions of up to 112 people.

A few steps away from Patten Hall is the two-story L-shaped wing known as the education building. Energy-saving lighting, efficient windows, and Wi-Fi incorporate elements to enhance form and function throughout this building. The grand staircase, with an elevator nearby, welcomes families bringing loved ones for nursery and Sunday School. This building contains a large choir room, drama room, movie room, adult and children classrooms, two nurseries, a library, two coffee stations, and a small kitchen. The first floor has a beautiful, serene chapel where evening services, small weddings, small memorial services, and large adult classes are held. The church offices and conference room are also on this floor.

BUILDING/PROPERTY

Buildings and Grounds of Palms Presbyterian Church and Preschool



Hess Chapel, a beautiful worship space, allows for flexible seating. The chapel, as well as many of the rooms, has a view of the Oasis Garden. The garden was designed by a former associate pastor as a setting of respite, calm, and mediation and is listed as an International Quiet Garden. Benches are scattered throughout the garden to offer the visitor a visual and auditory invitation to pause and absorb the attractive fountains, trees, and plantings. At one end of the Oasis Garden is a well-secured outdoor Columbarium and memorial garden where cremains of beloved are interred. This area also includes seating areas and a flowing water garden.

The covered walkway from the Oasis Garden leads to the Fellowship Hall, youth room, extended day program rooms, and a preschool building. Fellowship Hall, with its 9,000 square feet of space, accommodates 300 people with a stage and a large commercial kitchen. This space provides opportunities for many different types of activities.



Just off the Fellowship Hall, which can also be used for gym activities, is the recently renovated youth room. This room with its own kitchenette is the central hub of middle and high school activities.

The preschool office and classrooms welcome 100+ children plus staff year-round. Three outdoor fenced play areas for children complement the campus.

Completing this total enclosed facility of 64,529 square feet are two paved parking lots. The facility is fastidiously cared for, well maintained, and all roofs have recently been replaced.

The Palms buildings are also host to many outside groups that meet weekly, monthly, yearly, or occasionally.

FINANCIAL STATEMENT

Date : 02/09/2022
Time : 12:28:38 PM

Palms Presbyterian Church
Balance Sheet
December 2021

Page : 1

Accounts

Assets		
Current Assets		
Checking Accounts		
Ameris Bank Checking Account		
Baldwin Account	\$219.35	
Choral Interns Account	\$677.00	
Church Operating Account	\$32,465.26	
Feeding Hungry Children Account	\$332.52	
Fine Arts Account	(\$260.67)	
Organ Account	\$6,279.39	
Preschool Account	\$19,439.30	
Property Account	\$8,372.90	
Sharkey Account	\$1,000.00	
Walker Lecture Series Account	\$21.64	
Total Ameris Bank Checking Account	\$68,546.69	
Ameris Bank Money Market Acct		
Baldwin MM Account	\$30,000.00	
Choral Interns MM Account	\$34,450.00	
Church Operating MM Account	\$476,626.90	
Feeding Hungry Children MM Account	\$1,140.00	
Fine Arts MM Account	\$59.00	
Organ MM Account	\$26,793.00	
Preschool MM Account	\$190,070.60	
Property MM Account	\$52,742.50	
Sharkey MM Account	\$19,000.00	
Walker Lecture MM Account	\$1,000.00	
Total Ameris Bank Money Market Acct	\$831,882.00	
Total Checking Accounts	\$900,428.69	
Petty Cash		
Church Petty Cash	\$250.00	
Preschool Petty Cash	\$150.00	
Total Petty Cash	\$400.00	
Total Current Assets		\$900,828.69
Investments		
Fidelity		
Baldwin - Fidelity Account	\$181,699.45	
Choral Interns - Fidelity Account	\$32,062.43	
Church Reserves - Fidelity Account	\$200,030.45	
Feeding Hungry Children - Fidelity	\$1,051,990.14	
Fine Arts - Fidelity Account	\$300,220.65	
Organ Repair - Fidelity Account	\$160,489.77	
Property Perpetual - Fidelity	\$5,964,853.94	
Property Short Term - Fidelity	\$0.15	
Walker Lecture Series - Fidelity	\$74,706.95	
Total Fidelity	\$7,966,053.93	
Total Investments		\$7,966,053.93
Fixed Assets		\$6,046,819.27
Total Assets		\$14,913,701.89

FINANCIAL STATEMENT

Palms Presbyterian Church
Balance Sheet
December 2021

Liabilities, Fund Principal, & Restricted Funds

Liabilities

Other PR Deductions-Preschool		<u>\$7.47</u>
Total Liabilities		\$7.47

Fund Principal and Excess Cash Received

Fund Principal

Beginning Balance - Baldwin	\$263,733.45
Beginning Balance - Choral Interns	\$46,438.91
Beginning Balance - Fine Arts	\$276,520.28
Beginning Balance - Operating Fund	\$427,414.10
Beginning Balance - Organ Fund	\$174,210.85
Beginning Balance - Preschool	\$129,339.54
Beginning Balance - Property Endow	\$5,368,513.90
Beginning Balance - Sharkey	\$20,000.00
Beginning Balance - Walker Lecture	\$75,784.08
Fixed Assets	<u>\$5,979,739.27</u>

Total Fund Principal **\$12,761,694.38**

Excess Cash Received

Excess Cash Received - Operating	\$117,554.00
Excess Cash Received - Property Endowment	\$657,455.59
Excess Cash Received - Baldwin	(\$51,814.65)
Excess Cash Received - Preschool	\$35,993.89
Excess Cash Received - Choral Interns	\$20,750.52
Excess Cash Received - Organ Fund	\$19,351.31
Excess Cash Received - Fine Arts	\$23,498.70
Excess Cash Received - Sharkey	\$0.00
Excess Cash Received - Walker Lecture Series	(\$55.49)
Excess Cash Received - Feeding Hungry Children	<u>\$1,053,462.66</u>

Total Excess Cash Received **\$1,876,196.53**

Total Fund Principal and Excess Cash Received **\$14,637,890.91**

Restricted Funds

Total Temporary Restricted	<u>\$275,803.51</u>
----------------------------	---------------------

Total Restricted Funds **\$275,803.51**

Total Liabilities, Fund Principal, & Restricted Funds **\$14,913,701.89**

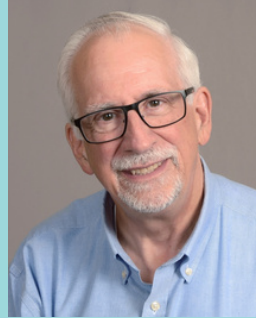
PALMS STAFF



REV. BRYANT
ANDERSON
PASTOR/HEAD OF
STAFF



DR. RONN
CUMMINGS
DIRECTOR, FINE
ARTS



BILL WILDEY
ADULT MINISTRY
DIRECTOR



DANA RILEY
CONNECTION AND
CARE COORDINATOR



LORI VAUGHN
CHURCH BUSINESS
DIRECTOR



JIMMY STEELE
STUDENT MINISTRY
DIRECTOR



ALEX CRAWFORD
FACILITIES
DIRECTOR



NOEL MILLAN
FACILITIES ASSISTANT



SALLIE GIPSON
ADMINISTRATIVE
ASSISTANT



MELISSA CLAPP
ADMINISTRATIVE
ASSISTANT



LESLEY HUNTER
ADMINISTRATIVE
ASSISTANT



ANNETTE RITTER
RECEPTIONIST/FRONT
DESK VOLUNTEER
COORDINATOR

PALMS STAFF



KATIE BYRD
NURSERY
COORDINATOR



KATHY FORTSON
ORGANIST

PRESCHOOL STAFF



KADESHA BAKER
PRESCHOOL
DIRECTOR



PAM TITLOW
ADMINISTRATIVE
ASSISTANT

PALMS MEMBERS/DISCIPLES- WHO WE ARE

Age	65% older
Education	88% with college degree; almost 40% with graduate degree
Ethnicity	1% minority
Family Size	82% live in a household of 1 or 2 people
Gender	70% female
Income	60% with incomes > \$100K annually
Residents	66% live within the beach community 34% live within Jacksonville and beyond
Theology	slightly more progressive than conservative with high theological diversity
Giving	annual contribution \$3,229 per household



PALMS COMMUNITY

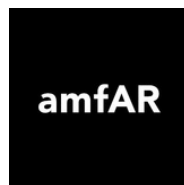
Our Partners

As a community, Palms has always looked beyond itself into God's world and has been instrumental in the formation of local mission organizations. Palms was part of the collaboration among beach churches that established Pablo Towers, a senior subsidized housing facility. Palms was a founding partner of Mission House, offering comprehensive services to individuals who are homeless, and Beaches Emergency Assistance Ministry (BEAM), offering comprehensive services to the underemployed or underserved communities at the beaches and beyond. Palms remains an active partner with Mission House, BEAM, and Beaches Habitat for Humanity.

In addition, Palms has multi-denominational and multi-faith connections in the wider Jacksonville community through our participation in the Beaches Ministerial Association and OneJax. Our association with Temple Beth-El Synagogue developed into a small group study of the Hebrew scriptures and an annual Thanksgiving service, which alternated between Palms and Temple Beth-El. Due to leadership changes in both congregations, this relationship is on hold for the near future.

The Deliberative Dialogue conversations, which have been facilitated by the Common Grounds ministry of Palms, are one of our most vital connections with our community. Conversations on Gun Violence, Racism, Sea Level Rise, Health Care, and other relevant topics bring in a variety of individuals from the beaches area to share perspectives and listen to one another in an effort to build bridges of reconciliation in a divided world and to address concerns of our community. The mayors of the three Beaches communities – Jacksonville Beach, Neptune Beach, and Atlantic Beach – have been active participants in the Deliberative Dialogue process and have shared their reflections on the role Palms plays in our community.

Our community extends internationally to include these partners: Haiti Reforestation Partnership, Haiti Outreach Ministries, AMFA (Affordable Medicines for All), The Sanneh Institute, and The Someone Silk Project.



THE PALMS COMMUNITY- WHERE WE LIVE & WORSHIP

Palms Presbyterian Church is located a block from the Atlantic Ocean on a barrier island that is home to seven north Florida beach communities. Just a quick drive over the Intracoastal Waterway is the city of Jacksonville, Florida, population of more than 900,000. Jacksonville became the largest city in landmass in the contiguous 48 United States after the city and county governments consolidated in 1968. The larger metropolitan area is more than 1.5 million people.

Jacksonville and its beaches are fortunate to have a “sub-tropical” climate with a mean January temperature of 53 and a mean July temperature of 83. The beaches’ weather is often warmer in the winter and cooler in the summer due to the mitigating effects of the ocean.

Jacksonville Beach is the largest of the beach communities with a population of almost 24,000. It has the largest commercial district of the beach cities and is home to a large fishing pier and the majority of the beach hotels. With its many restaurants and bars, it has a lively nightlife.

Neptune Beach, north of Jacksonville Beach, is mainly a residential community with a population of over 7,000.

Atlantic Beach, further north, is largely a residential community of almost 14,000. The Naval Station Mayport, home of the 4th fleet, is located in Atlantic Beach.



Between Atlantic Beach and Neptune Beach where Atlantic boulevard ends at the Atlantic Ocean is the Beaches Town Center, a lively several-block area that is home to twenty restaurants and many shops, two hotels, and more. Affectionately known as “The Corner” by locals, the area is often overflowing with people, bicycles, and dog walkers.

Mayport is a beach community north of Atlantic Beach. It is a small village that is an active fishing port and home to seafood markets and restaurants.

South of Jacksonville Beach is the St. John’s County beach community of **Ponta Vedra Beach**, a largely residential community of 30,000. Ponta Vedra is home to several golf courses and a concert hall. TPC Sawgrass is home to the annual The Players’ Golf Tournament.

THE PALMS COMMUNITY- WHERE WE LIVE & WORSHIP

Downtown Jacksonville is approximately a 22-mile drive west from Palms. Jacksonville has the magnificent St. Johns River flowing north through the middle of the city. The river then turns east for 15 miles where it empties into the Atlantic Ocean. Downtown Jacksonville is the headquarters of CSX, FIS, TIAA Bank, Florida Blue, Black Knight, and numerous other companies. The downtown area has the regional hub for the Baptist HealthCenter/MD Anderson Hospital and the government center. A large concentration of businesses and corporate offices are located to the east in large office parks along Southside Boulevard and the Gate Parkway. St John's Town Center, a large regional restaurant/shopping destination with stores ranging from Target to Nordstrom, is in this area. Jacksonville has a thriving arts community with outstanding performance facilities including the Times-Union Performing Arts Center, the art deco Florida Theater, and the newly renovated LaVilla Theatre. The city has the very highly regarded Jacksonville Symphony, Florida Ballet, and Jacksonville Jazz Festival. The Cummer Art Museum and Gardens and the Museum of Modern Art are located in the near/heart of downtown. The city is very proud to be the home of the NFL team, the Jacksonville Jaguars, and the minor league baseball team, The Jumbo Shrimp. Other medical facilities include the nationally recognized Wolfson Children's Hospital, Nemours Children's Health, University of Florida Hospital, and the Jacksonville site of Mayo Clinic located just minutes from Palms Presbyterian Church. Lastly, the Jacksonville area is home to the University of North Florida with 16,000 students located within five miles of the church. The area is also home to four campuses of the Florida State College of Jacksonville, Edward Waters College, and Jacksonville University, a private school of 3,000 students located on the St. Johns River in the Arlington neighborhood. On the west side of the Intracoastal Waterway, a short drive from Palms, are many relatively new subdivisions with young diverse populations as well as several gated communities with golf courses.

Palms families live in neighborhoods in Atlantic Beach south to St. Augustine and west into the city of Jacksonville.

Palms is located within minutes of schools, parks, and communities for seniors.

The distribution of the zip codes is:

41% in Ponte Vedra Beach, Ponta Vedra, Nocatee

26% in the three beach communities of Atlantic Beach, Neptune Beach and Jacksonville Beach

24% in the "West Beaches" or eastern part of Jacksonville

9% in St. Augustine and throughout Jacksonville

COMMUNITY INTERVIEWS

Interview with the Hon. Elaine Brown, Mayor of Neptune Beach

Elaine was very enthusiastic about Palms.

- * She is very familiar with our Outreach Programs - "gets a lot of info."
- * She thinks "Palms has taken community interaction to a whole new level regarding."
- * She has been to Palms and finds it "welcoming, warm, and beautiful."
- * She says, "She gets a good feeling when she drives by. It is a great part of the community."
- * She says, "Palms is doing more than most by outreach, dialogue, and awareness."
- * When asked if there is anything more we can do, she responds, "Nothing specific, just use every resource to get info and keep doing good."

Interview with the Hon. Ellen Glasser, Mayor of Atlantic Beach

- * Ellen loves Palms because "we don't have boundaries." That is, other churches in her area do not make the effort to extend beyond their own congregational needs.
 - * She is impressed by our "works" in her community, e.g., food for camps, Black History sponsor, Common Grounds, workforce housing; appreciates that the pastors are involved in her community.
 - * She wishes that the Beaches Faith Community would collaborate more on the "larger issues."
- The example she gave was that, although the dialogues (e.g., Common Grounds) are great, they mostly involve "like-minded people." She would like to find ways to bring more political, and philosophical diversity to the conversations.



THE LARGER FAITH COMMUNITY

Palms Presbyterian serves the religious needs and desires of people in the beach area along with these other religious organizations:



Beach Church (United Methodist)
Beaches Chapel Church
Beth El Synagogue
Chet's Creek Church
Christ Episcopal
Church of Christ Jax Beach
Church of Our Savior (Episcopal)
Church of the Redeemer (Angelicant)
Community Presbyterian (PCUSA)
First Assembly of God
Hodges Boulevard Presbyterian Church (PCUSA)
Kernan Blvd. Baptist Church
Mayport Presbyterian Church (PCUSA)
Oak Harbor Baptist Church
Ocean City Church
Ocean Park Baptist Church
Our Lady of the Star (Catholic)
Ponte Vedra Presbyterian Church (PCA)
St Andrew AME Church
St Andrews Lutheran (ELCA)
St. John the Baptist Catholic Church
St. Paul's by the Sea Episcopal
St. Paul's Catholic Church
The Church of Eleven22 (non-denomination)
Unity of Jacksonville Beach

PALMS' SEARCH PROCESS

In February 2022, Palms' Associate Pastor Nominating Committee was elected through a congregational meeting. The committee began working in March 2022 and meets weekly. Our meetings begin with prayer and a devotional as we seek God's guidance in this important endeavor.

The APNC is thankful and grateful for the support and guidance of our head pastor, Bryant Anderson, as we search for an Associate Pastor to focus on Serve (Outreach and the Board of Deacons) and Connections Ministries.

The APNC is fortunate to have Rev. Craig Davies as the liaison from the Presbytery of St. Augustine's Call Commission. As the search process moves forward, we ask for prayers for the church, its mission, and its future leadership.

Committee Members

David Massais (Moderator)

Carol Barbour

Rod Chally

Tim Jenkins

Lauren Kelly

Kathleen Mantia

FloAnne O'Brien